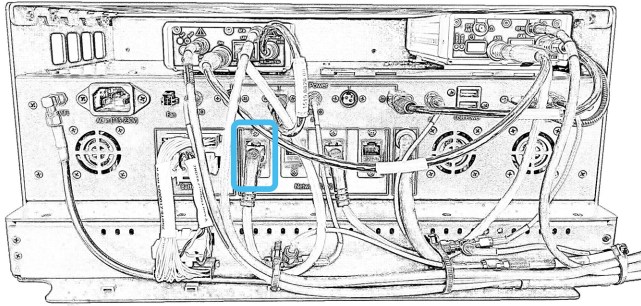




## Assigning GAR to the WiFi network for the first time

1. Disconnect the network cable shown below, then connect a network cable from this port to your computer.

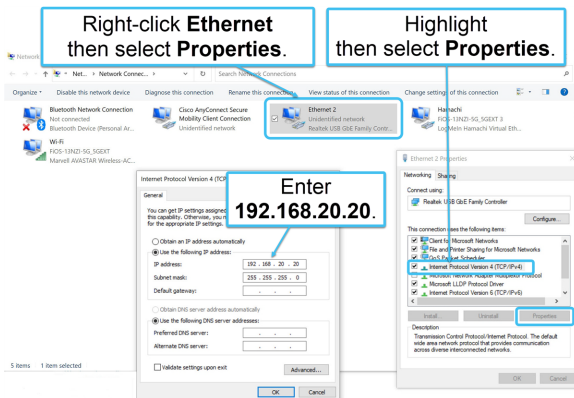


2. On your computer, open the **Network Connections** window and assign the local IP address for the port you are connected to. To do this:

- a. In the **Wi-Fi Properties** dialog box, highlight **Internet Protocol Version 4 (TCP/IPv4)**, then click **Properties**.

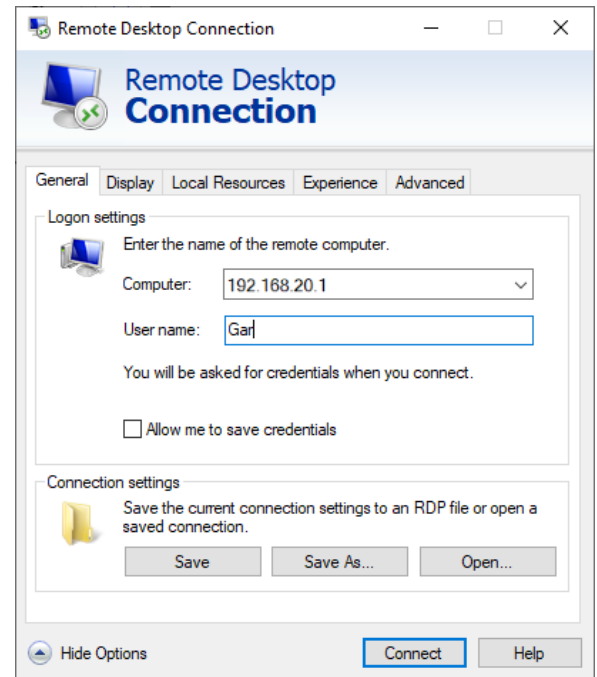
The **Internet Protocol Version 4 (TCP/IPv4)** dialog box opens.


- b. Select **Use the following IP address**, then in **IP address** enter the address for the port you connected to which is **192.168.20.20**.



3. On your computer, open the **Remote Desktop Connection**.

- a. In **Computer** enter **192.168.20.1**.
- b. In **User name** enter **Gar**, and for the password enter **gar**. You can select to save the connection so that you do not need to enter the these details in the future.
- c. Click **Connect**.



4. Once logged into your GAR unit click  on your computer's taskbar to assign the Wi-Fi Network.



Ensure you select **Connect Automatically** so that in the future when your GAR unit is powered on it automatically connects to this network if available.

